



Digital Attenuator, 30 dB, 4-Bit, TTL Driver, DC-3.0 GHz

V 5.00

AT65-0233

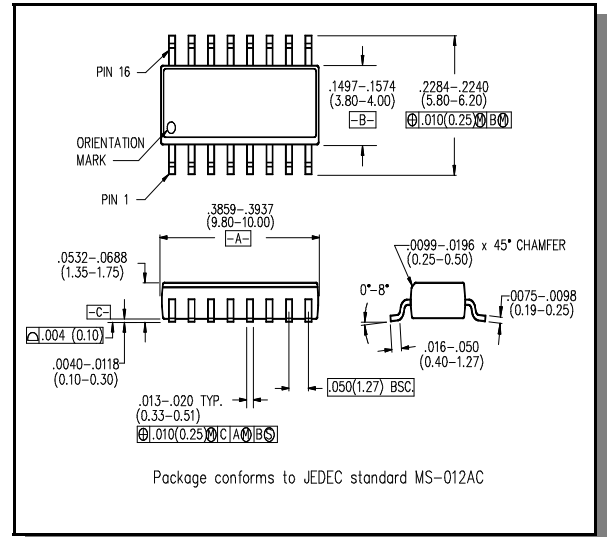
Features

- Attenuation: 2.0 dB steps to 30 dB
- Low DC Power Consumption
- Integral TTL Driver
- 50 Ohm Impedance
- Temperature Stability: ± 0.18 dB from -55°C to $+85^{\circ}\text{C}$ Typ.

Description

M/A-COM's AT65-0233 is a GaAs FET 4-bit digital attenuator with a 2.0 dB minimum step size and a 30 dB total attenuation range. This device is in a SOIC-16 plastic surface mount package. The AT65-0233 is ideally suited for use where accuracy, fast speed, very low power consumption and low costs are required. Typical applications include dynamic range setting in precision receiver circuits and other gain/leveling control circuits.

SO-16



Electrical Specifications: $T_A = 25^{\circ}\text{C}$

Parameter	Test Conditions	Frequency	Units	Min.	Typ.	Max.
Insertion Loss	—	DC - 0.5 GHz	dB	—	1.7	2.0
		DC - 2.0 GHz	dB	—	2.3	2.7
		DC - 3.0 GHz	dB	—	2.6	3.1
Attenuation Accuracy	Any Bit or Combination of Bits	DC - 3.0 GHz	dB	$\pm (.4 + 8\% \text{ of attenuation})$		
VSWR	Full Range	DC - 3.0 GHz	Ratio	—	—	1.7:1
Trise, Tfall Ton, Toff Transients	10% to 90% 50% Cntl to 90%/10% RF In-Band	—	nS	—	10	50
			nS	—	30	150
			mV	—	35	—
1 dB Compression	Input Power Input Power	0.05 GHz	dBm	—	+20	—
		0.5 - 3.0 GHz	dBm	—	+28	—
Input IP_3	Two-tone inputs up to +5 dBm	0.05 GHz	dBm	—	+40	—
		0.5 - 3.0 GHz	dBm	—	+50	—
Input IP_2	Two-tone inputs up to +5 dBm	0.05 GHz	dBm	—	+45	—
		0.5 - 3.0 GHz	dBm	—	+68	—
Vcc	—	—	V	4.5	5.0	5.5
-VEE	—	—	V	-8.0	-5.0	-4.75
Vctl	Logic (0) TTL	—	V	0.0	—	0.8
Vctl	Logic (1) TTL	—	V	2.0	—	5.0
Input Leakage Current (Low)	0 to 0.8 V	—	μA	—	—	20
Input Leakage Current (High)	2.0 to 5.0 V	—	μA	—	—	20
Icc	Vcc = 4.5 to 5.5 V	—	mA	—	—	4.0
-lee	VEE = -5.0 to -8.0 V	—	mA	—	—	-1

Pin Configuration

Pin #	Function	Pin #	Function
1	GND	9	C2
2	RF1	10	C1
3	GND	11	GND
4	N/C	12	GND
5	Vee	13	N/C
6	Vcc	14	GND
7	C4	15	RF2
8	C3	16	GND

N/C = No Connection

Truth Table

C1	C2	C3	C4	Attenuation
0	0	0	0	Loss, Reference
1	0	0	0	2.0 dB
0	1	0	0	4.0 dB
0	0	1	0	8.0 dB
0	0	0	1	16.0 dB
1	1	1	1	30.0 dB

0 = TTL Low; 1 = TTL High

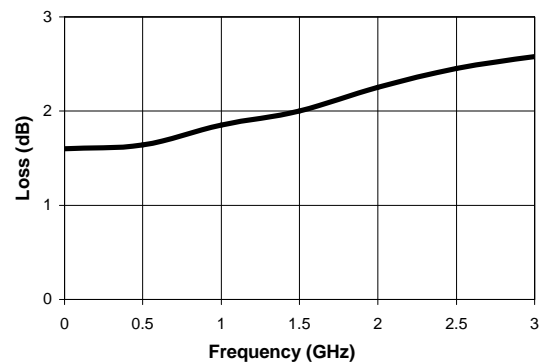
Absolute Maximum Ratings ¹

Parameter	Absolute Maximum
Max. Input Power 0.05 GHz	+27 dBm
0.5 - 3.0 GHz	+34 dBm
+Vcc	+5.5V
-Vee	-8.5V
Control Voltage ²	-0.5 to Vcc + 0.5V
Operating Temperature	-40°C to +85°C
Storage Temperature	-65°C to +125°C

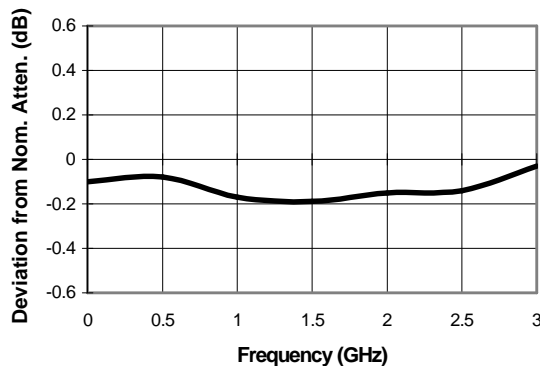
1. Operation of this device above any one of these parameters may cause permanent damage.
2. Standard CMOS TTL interface, latch-up will occur if logic signal is applied prior to power supply.

Typical Performance Curves

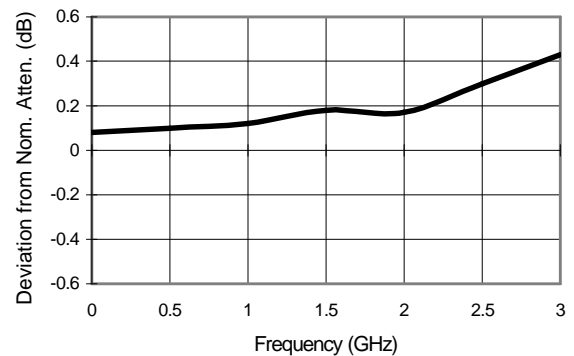
Typical Insertion Loss (dB)



Attenuation Accuracy, 2 dB



Attenuation Accuracy, 4 dB



Specifications subject to change without notice.

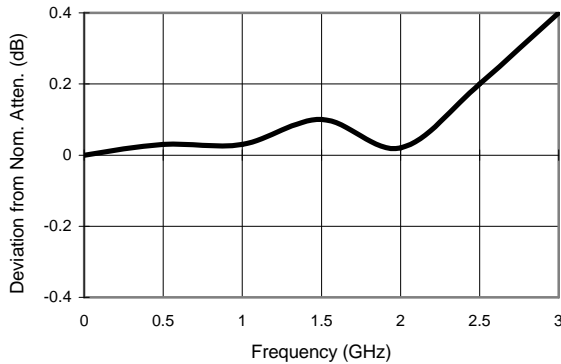
- North America: Tel. (800) 366-2266
- Asia/Pacific: Tel.+81-44-844-8296, Fax +81-44-844-8298
- Europe: Tel. +44 (1344) 869 595, Fax+44 (1344) 300 020

Visit www.macom.com for additional data sheets and product information.

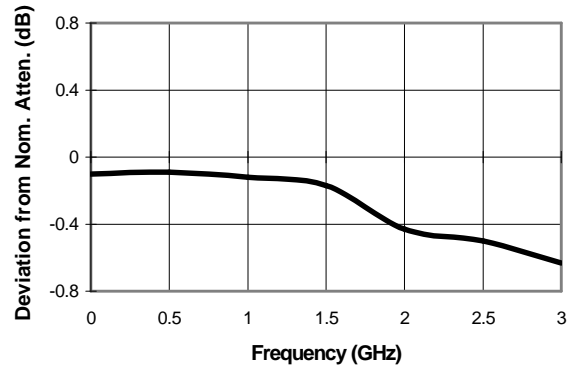


Typical Performance Curves

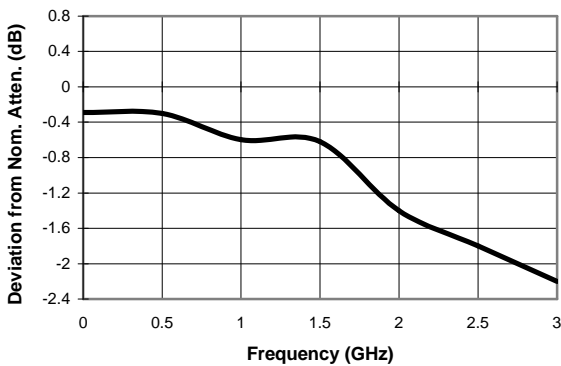
Attenuation Accuracy, 8 dB



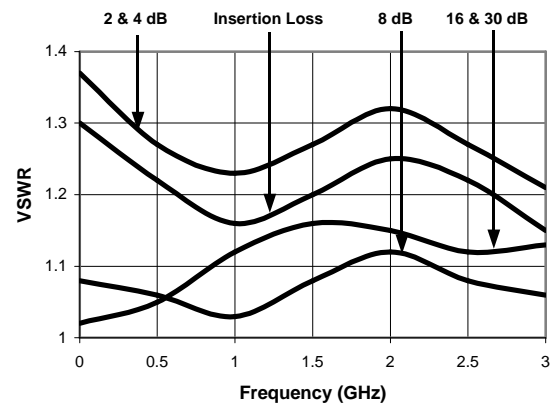
Attenuation Accuracy, 16 dB



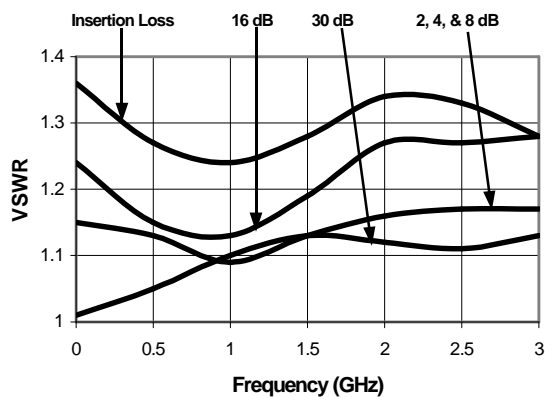
Attenuation Accuracy, 30 dB



Typical RF1 VSWR



Typical RF2 VSWR



Ordering Information

Part Number	Package
AT65-0233	SOIC-16 Lead Plastic
AT65-0233TR	Tape and Reel (1K Reel)
AT65-0233-TB	Unit mounted on a test board

Specifications subject to change without notice.

- North America: Tel. (800) 366-2266
- Asia/Pacific: Tel.+81-44-844-8296, Fax +81-44-844-8298
- Europe: Tel. +44 (1344) 869 595, Fax+44 (1344) 300 020

Visit www.macom.com for additional data sheets and product information.

